

## APA Referencing: How do I Reference a Figure or Artwork?

### Referring to a figure or artwork without reproducing it in your assignment

Write a full reference in your reference list and use in-text citations within your assignment.

#### Reference example

Bäckam, C., & Lutz, C. (2020). The impact of interest-only loans on affordability. *Regional Science and Urban Economics*, 80. <https://doi.org/10.1016/j.regsciurbeco.2018.06.004>

#### In-text example

... (Bäckam & Lutz, 2020).

OR

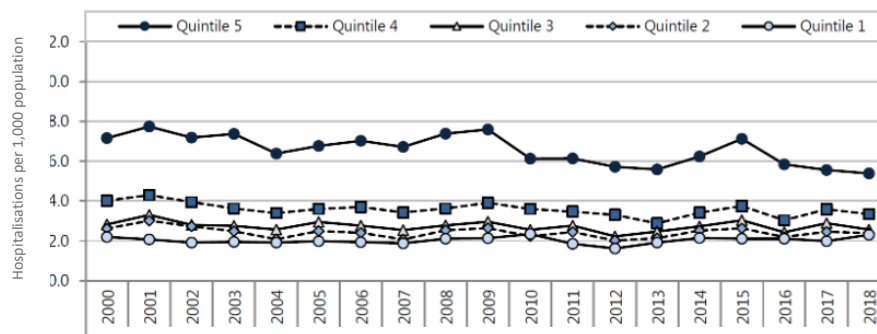
In Figure 1, Bäckam and Lutz (2020) show that ...

### Reproducing a figure your assignment

Head with the word Figure and a number in bold, then double space, followed by the title in title case and italics, and then double space and add the figure. Include existing *Note* information (if available), and add reference information and copyright information. Reproduced figure references are not included in the reference list, although a figures list may be required.

**Figure 1**

*Hospitalisation Rates for Pneumonia in 0–14 Year Olds, by Deprivation Score, New Zealand 2000–2018*



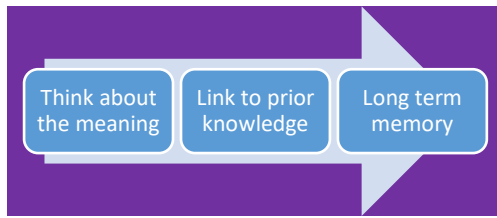
*Note.* Numerator: National Minimum Dataset (acute and arranged admissions; excludes neonates), Denominator: NZCYES Estimated Resident Population, Quintile: NZDEP2013 Index of deprivation (1 = least deprived; 5 = most deprived). From *Child poverty monitor 2019*, by M. Duncanson, G. Richardson, G. Oben, A. Wicken, and J. Adams, 2019, NZ Child and Youth Epidemiology Service (<http://www.nzchildren.co.nz/>). Copyright 2009–2019 by NZ Child & Youth Epidemiology Service.

## Creating a figure in your assignment

Head with the word **Figure** and a number in bold, then double space, followed by the title in title case and italics, and then double space and add the figure. Optional explanatory information may be included in a *Note* beneath the figure. A figures list may be required.

### **Figure 2**

#### *Enhancing Memory*



*Note.* The steps required for new information to be stored in long-term memory. This figure does not include the function of sensory or short term memory.

## Reproducing an artwork your assignment

Head with the word **Figure** and a number in bold, then double space, followed by the title in title case and italics, and then double space and add the table. In the *Note* beneath the figure, give explanatory information in the format artist, year, title of the work [Medium]. This is followed by reference to the source document or webpage. A figures list is required.

### **Figure 3**

#### *Blue on Yellow*



*Note.* Walters, G. (1967), Blue on yellow [PVA and acrylic on canvas]. From *A concise history of New Zealand painting*, by M. Dunn, 1991, p. 117, Craftsman House BVI. Copyright 1991, 1993 by Michael Dunn.

## What information do I need for a *Note* in a figure?

Elements that may be required to create a reference for a figure are as follows:

1. Explanatory information	Existing <i>Note</i> information to be copied Optional information may be added in a <i>Note</i> for a table you have created Artist, date, title, and medium for artworks reproduced in your assignment
2. Title	Title /subtitle of the document or webpage
3. Author/s	Author(s) of the document where you found the table <b>OR</b> Corporate author <b>OR</b> Editor(s) (whichever is available)
4. Date	Year <b>OR</b> No date (n.d.)
5. Source Information	Journal name, volume number, issue number, page number; publisher or website name <b>AND</b> DOI or URL (if available)
6. Copyright information	Copyright <b>OR</b> Creative Commons information (if available)

Updated July 01, 2020