

Māori Language Keyboard and Macrons

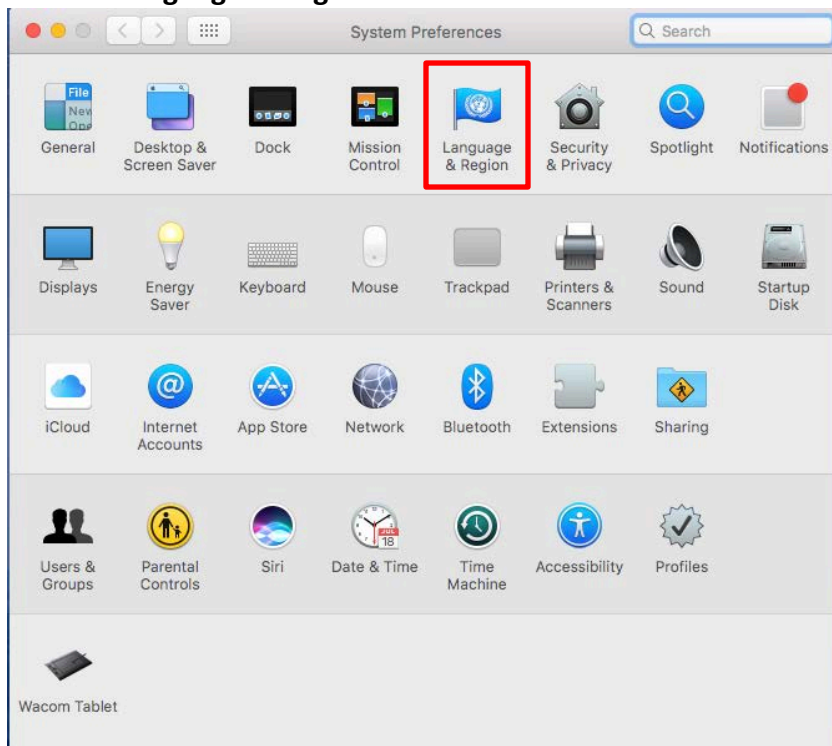
In order to add macrons to letters when typing in Te Reo Māori, you need to adjust your language settings by adding the language or keyboard.

Language

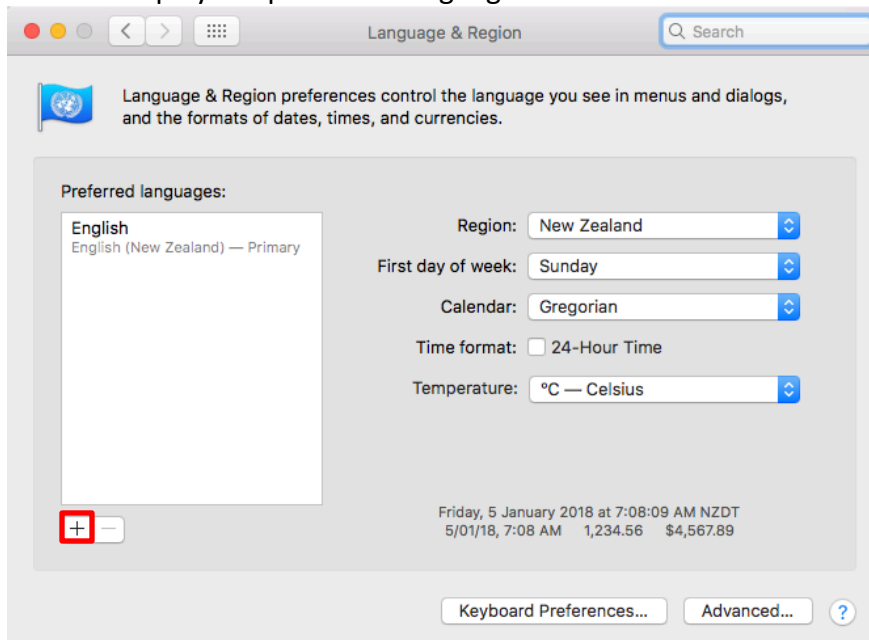
Click the **Apple** icon in the top left-hand corner. Then click **System Preferences**.



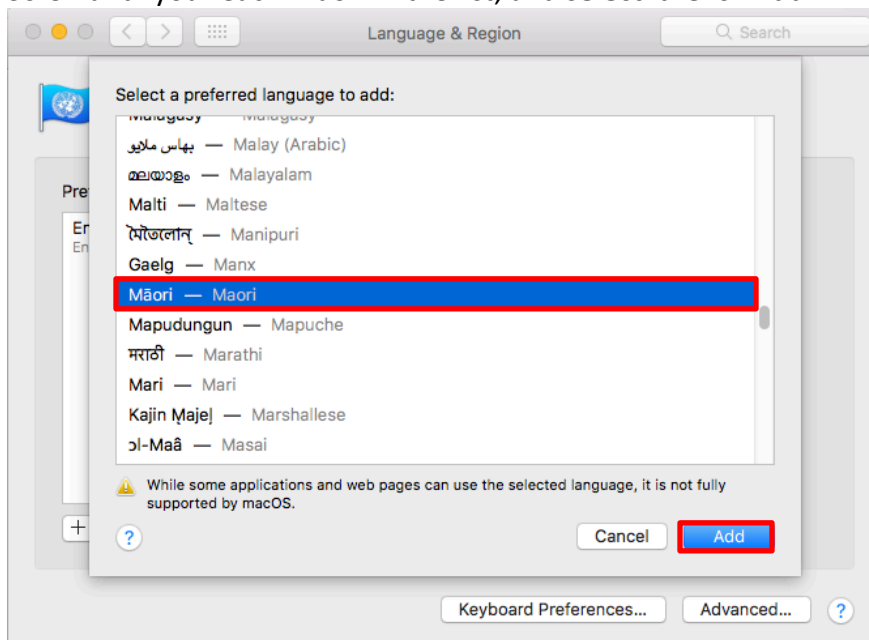
Click on **Language & Region**.



This will display the preferred languages. **Click** on the + to add Māori to the list

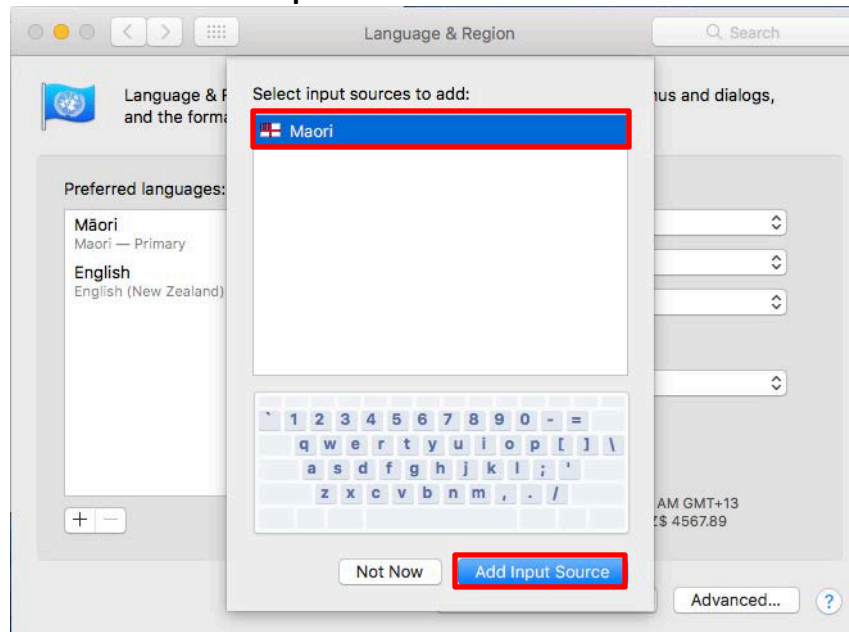


Scroll until you reach Māori in the list, and **select** it. **Click Add.**



If you make Maori your primary language, a pop up box will appear allowing you to select the Maori Language Input Source. This will add the Maori Keyboard.

Click Maori << Add Input Source



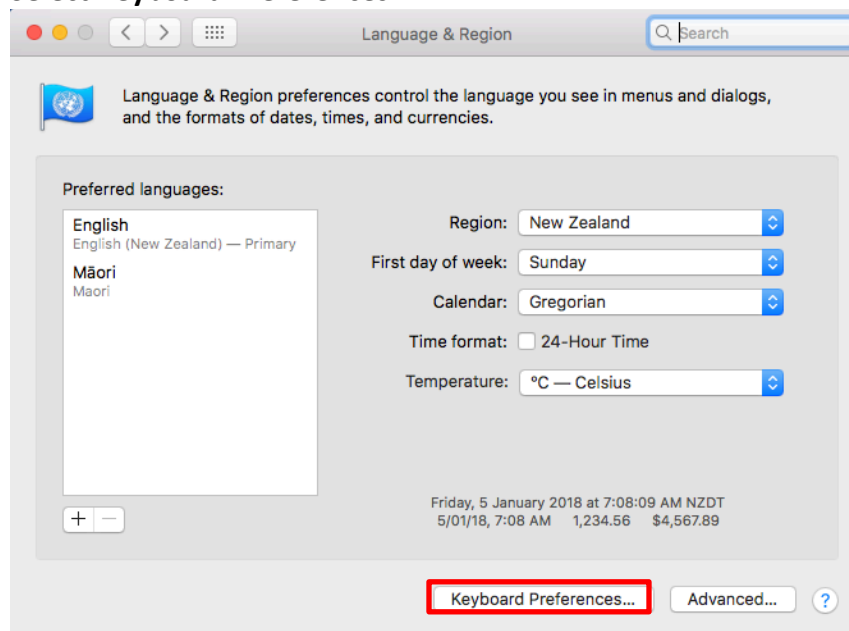
If you do not wish to set Maori as your Primary Language, follow the steps below to add the keyboard separately. **Click** and **drag** languages up or down the list to change the primary one.

Keyboard

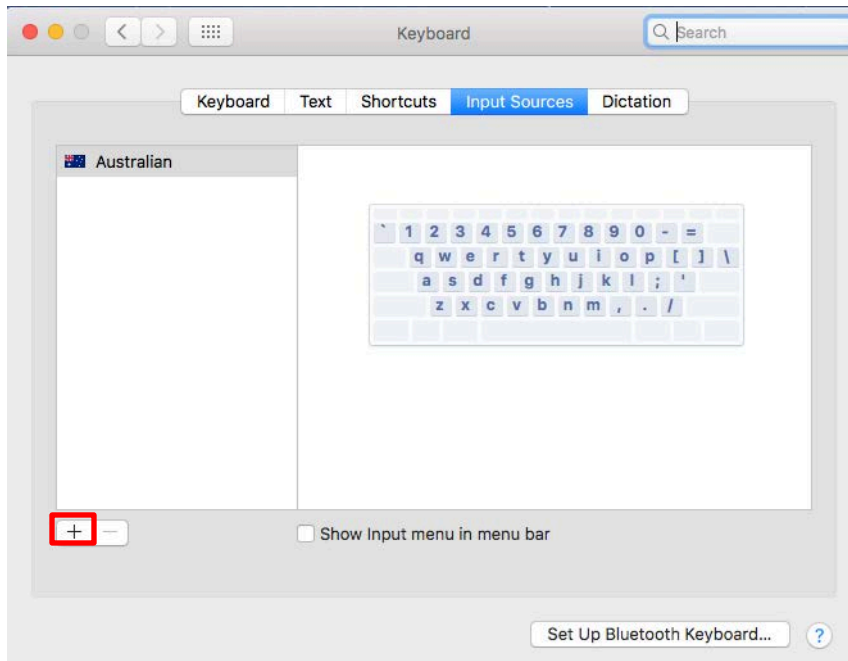
Navigate to the **Languages & Regions** section of the **System Preferences** as shown in the previous section.

Apple Icon << System Preferences << Language and Region.

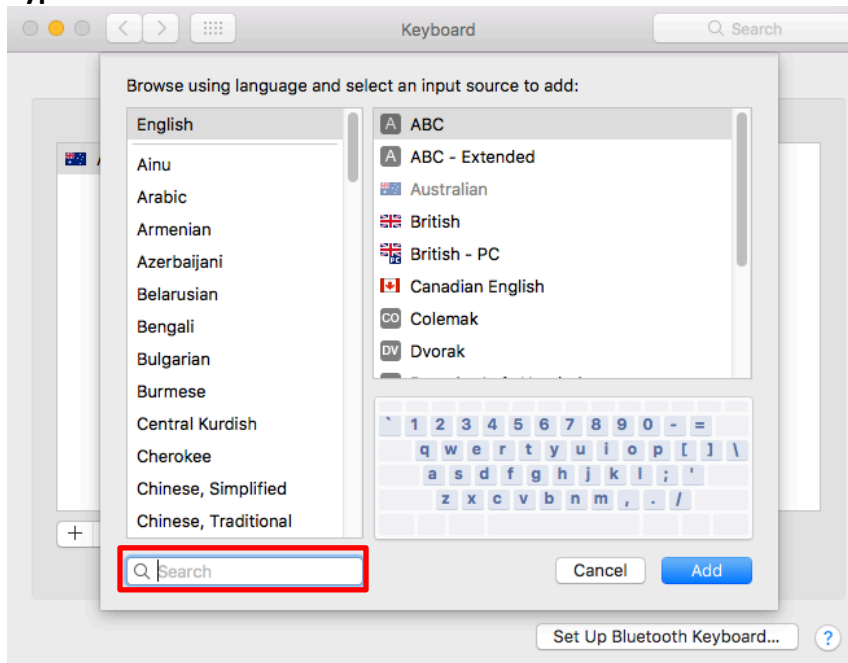
Select Keyboard Preferences.



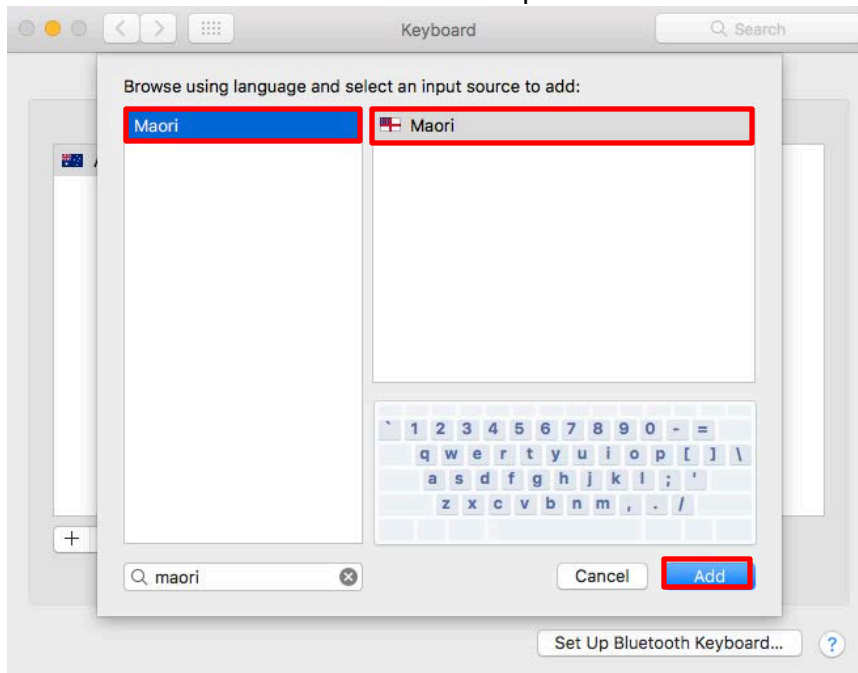
Click the + icon



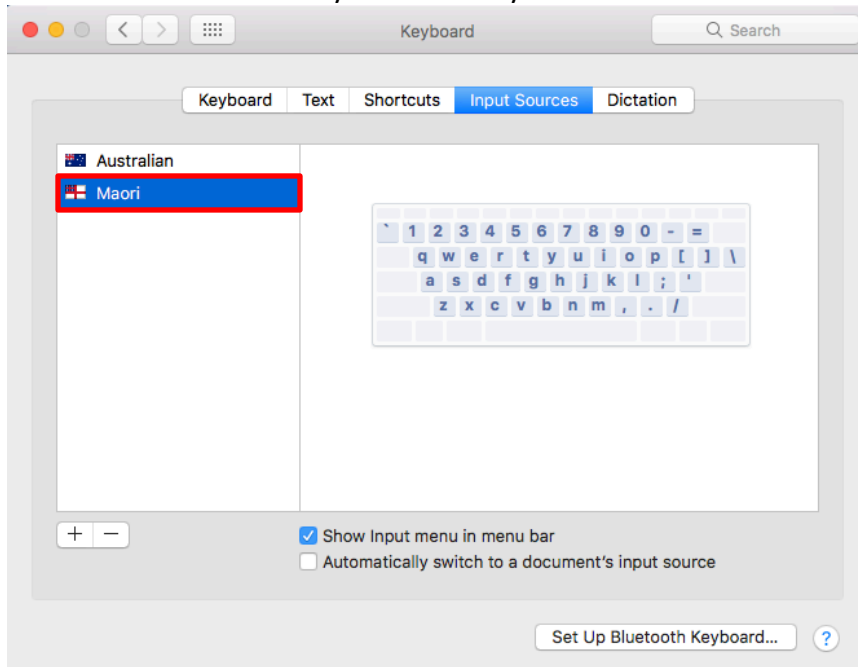
Type Māori onto the search bar.



Click **Māori** << Select **Māori** from the input source list << Click **Add**



Māori should now be on your list of keyboards. **Click** on it to start using it.



Then, go to the toolbar at the top of the screen. The **Flag Icon** should be displaying the Māori Flag, as opposed to the Australian one.

If it is not, **Click** on the flag and **select** Māori from the dropdown menu.

Applying Macrons

To apply a macron, hit the Alt/Options key and then the letter you want to place a macron over.
e.g. **Alt + a** will result in **ā**.